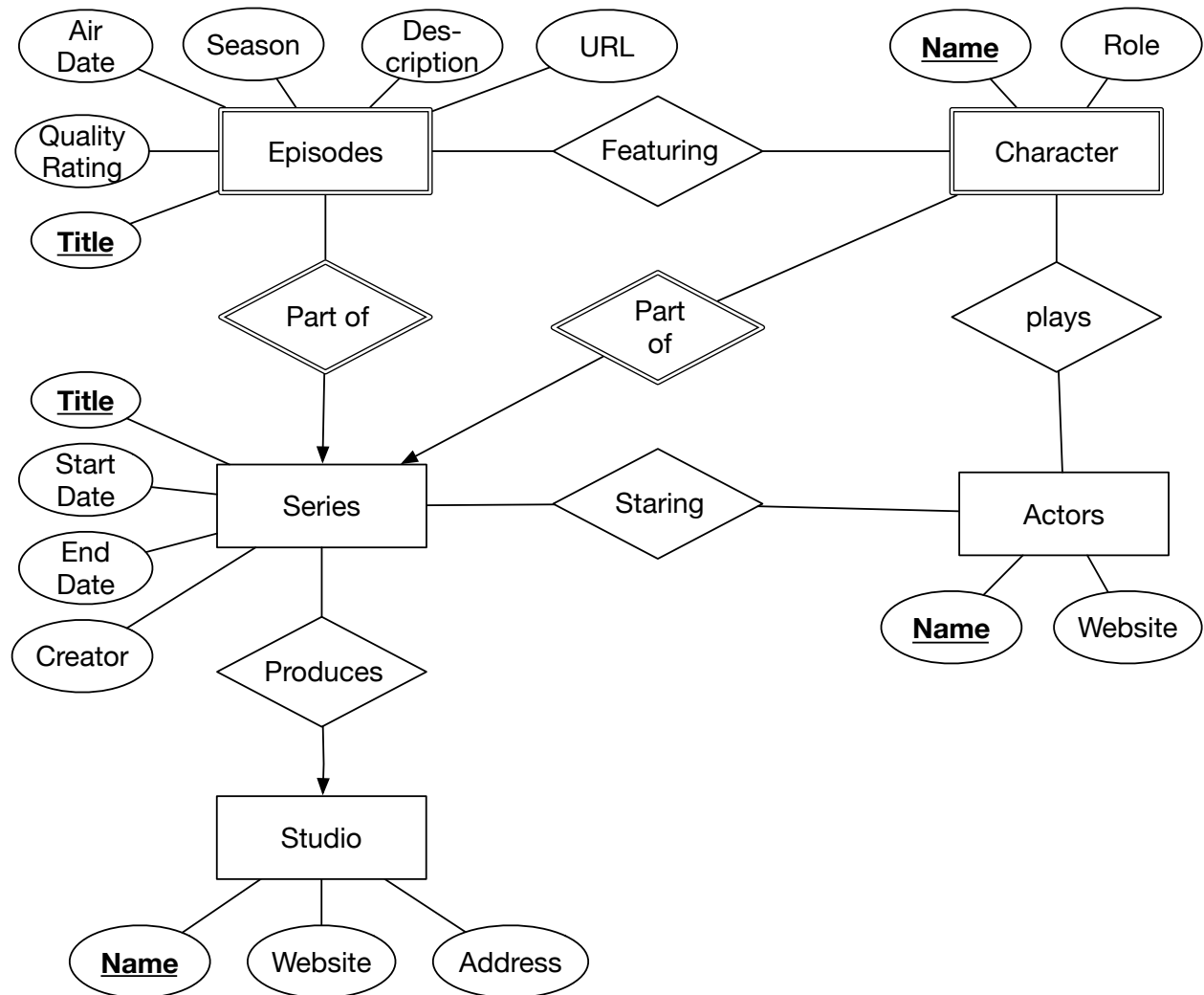


Homework 6

Due March 3, 2022

Problem:

The following E/R diagram represents a data base for a multi-series tv-show like Star-Trek. The entities **Episodes** and **Characters** are weak entities, because there might be two episodes with the same name in two different series, or because there might be two characters with the same name in two different series. However, two characters with the same name would not be in the same episode. We have many-to-one relationships. A character can only be part of one series (because the series are set in different centuries). An episode can only be part of one series. A series is produced by only one studio. We also leave open the possibility that the same actor stars in more than one series and plays more than one character, even in the same episode.



- (a) Translate the ER-diagram into a relational database scheme. Use underscores and table names to disambiguate the attribute name, as for example “Series_Title” and “Episode_Title”.
- (b) Looking at the resulting tables, discuss candidates for joining tables.
- (c) Implement the scheme in MySQL (or PostgreSQL) and introduce some data, which you should take from Star-Treck.